



Springwell Park Primary School – History



Topic: Fire and Flames

Phase: KS1

Focus: Knowledge and understanding of the world.

Key facts:

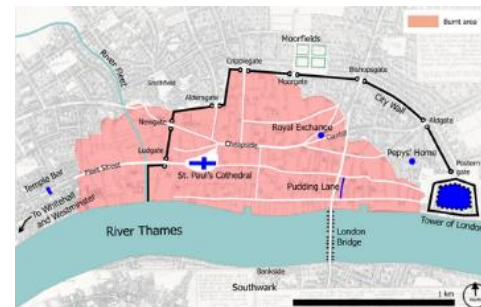
- The Great Fire of London started on 2nd September 1666, and burned for 5 days.
- The fire started in Pudding Lane bakery owned by Thomas Farriner. It started during the night.
- Prior to the fire, there had been a draught in London that last for 10 months, so the city was very dry.
- In 1666, London consisted of buildings made of straw and wood, and they were close together. This flammable material fuelled the fire.
- Over 13,000 houses, 87 churches and 1 cathedral burnt down during The Great Fire. The cathedral was Saint Paul's Cathedral.
- We know what happened due to eye witness accounts, such as Samuel Pepys.

Titanic Timeline

2 nd September, 1666.	A fire broke out in Pudding Lane in a bakery and spread across most of the city.
6 th September, 1666.	The very last fire was extinguished in the early morning by a crew led by Samuel Pepys.
25 th September, 1666.	A commons committee was set up to look into what caused the fire.
22 nd January, 1666.	A report about the fire was published, stating it was an accident. The king's council agreed.
1668.	New fire prevention regulation laws were approved by parliament.
1677.	The monument for The Great Fire was declared open.

Our Topic Vocabulary

Word	Definition	In context
Tragedy	An event that has caused great suffering and distress, normally linked to a disaster.	"The Great Fire of London was a tragedy."
Disaster	An un-expected occurrence that has resulted in a tragedy.	"The Great Fire is a disaster of epic proportions."
Historic	A famous and important event that has occurred in the past.	"It is a historical event that shaped the future."
Significant	Something that is important and memorable.	"There are many significant events that occurred during the fire."
Flammable	When something is easily set on fire.	"The houses were all made out of flammable material."
Combusted	When something is consumed and destroyed by a fire.	"A large number of buildings were combusted."
Destructive	When something causes great damage and is negative.	"The fire was severely destructive to everything in its path."
Survive	When something or someone continues to live.	"Some people did survive, and they gave eye-witness accounts."



The area in pink is the distance the fire spread to.

